

PART NAMES AND SYMBOL NUMBERS

GENERAL SAFETY INFORMATION

To prevent injury to yourself and/or damage to the equipment:

- Read carefully all owners manuals, service manuals, and or other instructions.
- Always follow proper procedures and use proper tools and safety equipment.
- Be sure to receive proper training.
- Never work alone while under a vehicle or while repairing or maintaining equipment.
- Always use proper components in applications for which they are approved.
- Be sure to assemble components properly.
- Never use worn-out or damaged components.
- Always block any raised or moving device that may injure a person working on or under a vehicle.
- Never operate the controls of the power take-off or other driven equipment from any position that could result in getting caught in the moving machinery.



ROTATING AUXILIARY DRIVESHAFTS



- Rotating auxiliary driveshafts are dangerous. You can snag clothes, skin, hair, hands, etc. This can cause serious injury or death.
- Do not go under the vehicle when the engine is running.
- Do not work on or near an exposed shaft when the engine is running.
- Shut off engine before working on power take-off or driven equipment.
- Exposed rotating driveshafts must be guarded.



WARNING: USING SET SCREWS

Auxiliary driveshafts may be installed with either recessed or protruding set screws. If you choose a square head set screw, you should be aware that it will protrude above the hub of the yoke and may be a point where clothes, skin, hair, hands, etc. could be snagged. A socket head set screw, which may not protrude above the hub of the yoke, does not permit the same amount of torquing as does a square head set screw. Also, a square head set screw, if used with a lock wire, will prevent loosening of the screw caused by vibration. Regardless of the choice made with respect to a set screw, an exposed rotating auxiliary driveshaft must be guarded.

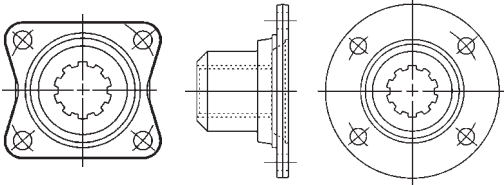


WARNING: GUARDING AUXILIARY DRIVESHAFTS

We strongly recommend that a power take-off and a directly mounted pump be used to eliminate the auxiliary driveshaft whenever possible. If an auxiliary driveshaft is used and remains exposed after installation, it is the responsibility of the vehicle designer and P.T.O. installer to install a guard.



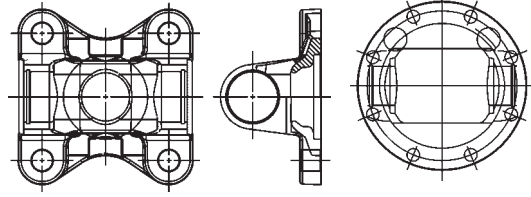
J300-P SAFETY MESSAGES AND GENERAL INFORMATION



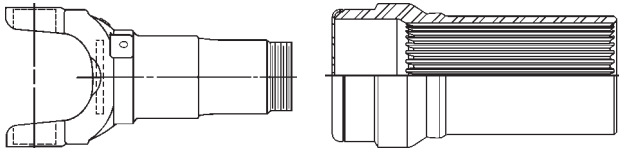
Rectangular

Circular

SECTION 1
Companion Flanges
(Center Digit 1)



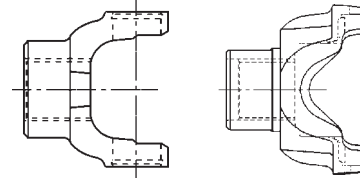
SECTION 2
Flange Yokes
(Center Digit 2)



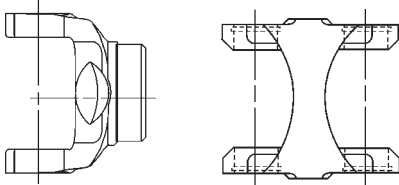
Slip Yokes
(Center Digit 3)

Splined Sleeves
(Center Digit 55)

SECTION 3



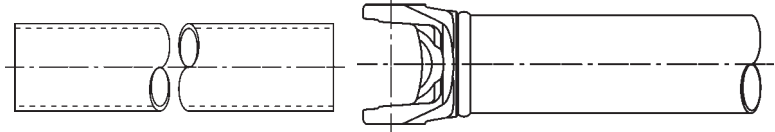
SECTION 4
End Yokes (Center Digit 4)



Tube Yokes
(Center Digit 26 or 28)

Center Yokes &
Center Plates
(Center Digit 26)

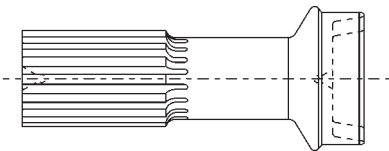
SECTION 5



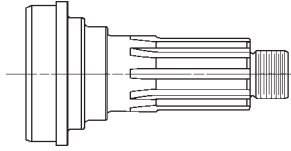
Tubing
(Center Digit 30 or 32)

Yoke & Tube Assemblies
(Center Digit 27)

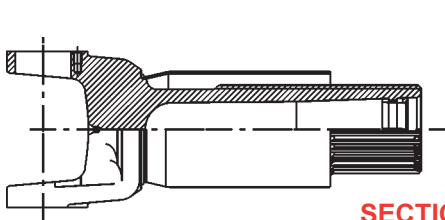
SECTION 6



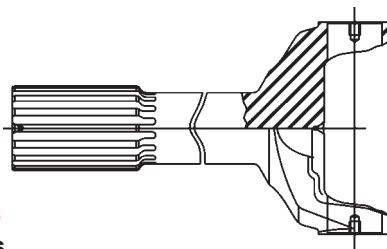
SECTION 7
Tube Shafts
(Center Digit 40 or 42)



SECTION 7
Midship Tube Shafts
(Center Digit 53 or 54)



SECTION 8
Yoke Shafts
(Center Digit 82)



- SECTION 9**
Miscellaneous Parts
- bolts
 - nuts
 - dust caps
 - balance weights
 - keys
 - tube deadeners
 - snap rings

ALWAYS IDENTIFY THE PART BY THE CENTER DIGIT (AS SHOWN ABOVE) OF THE COMPLETE PART NUMBER. In the complete part number, with the exception of Journal & Bearing Kits, Support Bearing Assemblies and tubing, the:

- 1st Number —Indicates the Joint Series
- 2nd Number —Indicates the Part Symbol Number
- 3rd Number —Indicates the Serial Number